



When every piece matters.



Choosing Castledex means choosing a partner that will be with you every step of the way. From inception to end of life.

Bruce Dewar / Director, Castledex



# When **every piece** matters.

## CDX Single Source; part of the Castledex Family

CDX Single Source is Western Australia's leading single-source FF&E provider and, through our eye for detail and expert staff we can provide unparalleled service in all aspects of FF&E procurement, quality furniture and innovative storage solutions.

Castledex is a Western Australian owned and operated company which specialises in the supply of quality commercial furniture, storage solutions and is a market leader in single-source procurement.

Our single-source approach reduces your costs and allows you to focus resources on other areas. We have extensive experience in stakeholder management, sampling processes and product sign-off. From initial interactions with Architects and Designers to delivery, installation and final in-room commissioning, Castledex & CDX Single Source has you covered across Australia and New Zealand.



**2400+**  
Products

**20+**  
Categories

**100+**  
Brands



# Service Offering

## Supply, Logistics, Project Management and Installation of Quality Commercial Furniture and Storage

Castledex is a market leader in the supply and installation of quality commercial furniture and storage solutions. Our single-source solution allows you to take advantage of our extensive supplier networks and world-renowned partner brands. No job is too big or small for our project management team who will liaise with our expert installation team to provide a safe, fast, and efficient on-site service. CDX Single Source has you covered across Australia and New Zealand.

## Cost Planning and Budget Preparation

The Castledex Team can provide cost planning, estimating and budget preparation as part of our single-source solution. Our in-depth market knowledge and networks will allow us to produce accurate cost plans that evolve with your project. Where necessary, we can tap into our pool of Quantity Surveyors and Cost Planners in developing cost plans or budgets in detail and accuracy as more information becomes available about the nature, scope, and value of the project.

## Master Item List, Detailed Specifications and Detailed Design

Our market knowledge is second to none Castledex can provide detailed specifications for most projects. Where a job is complex or requires extensive detailed design, we can partner with several design and architecture firms to provide you with the latest on-trend options and furniture designs for your project. Once you have made selections, Castledex can produce Master Item Lists populated with all relevant information as the project progresses.





## Tendering and Procurement Process

Tendering and Procurement Processes can be costly and time-consuming exercises. Castledex can provide several value for money options that will help you to streamline the process. We can offer a turn-key service from the start to the end of the procurement process. We can also provide advisory services, tender clarification advice, undertake document preparation and complete evaluation assessment against set criteria.

## Sampling and Client Sign-off

Client sign-off is key to any project, often competing interests and, multiple stakeholders require input with different ideas and priorities. Castledex can find the path of least resistance in sampling and client sign-off. Our expert advice, knowledge and years of experience will ensure value for money while the general aesthetic and design intent is maintained.

## Asset Management, Spend Analysis, Maintenance, Planning and Life Cycle Modelling

Procurement costs can quickly add up, managing multiple contracts can be a drain on resources and, varying lengths of warranty can expose risk years after practical completion. Castledex expertise is in delivering results lead projects that relentlessly drive down costs. Our global supply network and standard and extended warranty structure will give you peace of mind. Our Life Cycle Modelling can plan future liability for the length of a PPP or PFI project up to 50 years.

## Asset Registers, RFID or QR Coding and Registers

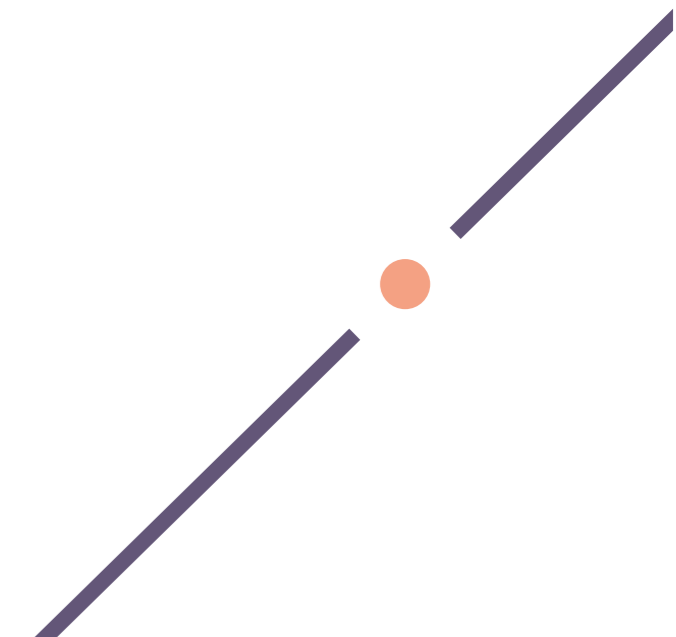
When a project includes high volumes, complex layouts or, multiple options to meet the design intent, Asset Registers become the master schedule for large parts of the job. Castledex can produce Asset Registers for any size project, with client-defined data and parameters. All the information you need to understand and manage the assets moving forward will be at your fingertips. Options for coding both passive (QR) and active (RFID) are available, making it easier to track and maintain your assets in any environment.

## Defecting, Reporting and BIM360 Management

Our approach is to continuously inspect, identify issues, raise where appropriate and always make good; we spot the problems before you do. Castledex is adept at using the latest reporting software, capturing, and annotating photos and reports on any defects and remedial work undertaken. The level of detail reported is up to you. We guarantee that it will always include all relevant information presented in a concise format.

## Commissioning, Asset Handover, OMM Documentation

Our ethos of “if it isn’t perfect, it doesn’t go in” speeds up the commissioning process on all jobs. We are always confident in our supply and delivery of items in perfect condition. Castledex prides itself on being on time and to program on every project. Our clear and concise handover documentation is market-leading and reduces the time spent on asset handover. We can complete handover however the client wishes, either by item, room, floor, area, or building. Our Operating and Maintenance Manuals will provide facilities management with all the documentation they need to manage assets moving forward.





Our single-source solution allows you to take advantage of our extensive supplier networks and world-renowned partner brands.

No job is too big or small for our project management team who will liaise with our expert installation team to provide a safe, fast and efficient on-site service.

# CONTENTS

|                            |    |
|----------------------------|----|
| Seating .....              | 4  |
| Desks / Workstations ..... | 26 |
| Tables .....               | 30 |
| Storage .....              | 44 |
| Lighting .....             | 50 |
| Accommodation .....        | 56 |
| Joinery .....              | 62 |
| Ancillary .....            | 66 |



# Seating

Task Seating

Meeting / Boardroom

Visitor

Dining / Breakout

Stools

Outdoor

Ottomans

Sofas

Modular Lounges

2021 / 2022 COLLECTION



**FERN TASK CHAIR**

**Haworth**  
737 x 724 x 1054mm  
Fern's design puts the person at the centre with ergonomic innovations that provide total back support, edgeless comfort, and free movement.



**SOJI TASK CHAIR**

**Haworth**  
740 x 640 x 1120mm  
Thoughtfully designed and informed by ergonomics, Soji is a highly-adjustable task chair that syncs your body and mind the second you sit down.



**VERY TASK CHAIR**

**Haworth**  
668 x 660 x 991mm  
Smart, versatile, and responsible. Its universal appeal includes a wide range of applications, recyclability, and a fantastic scope of colour.



**ALOHA TASK CHAIR**

**Haworth**  
686 x 660 x 940mm  
Sleek looks and an amazing new performance that's wholly comfortable. The new affordable task-chair hero in the workplace.



**T50 TASK CHAIR**

**Fursys**  
678 x 565 x 1100mm  
Chair of choice by corporations worldwide due to its unparalleled combination of ergonomic features, comfort, and value for money.



**MONA TASK CHAIR**

**Castledex**  
490 x 440 x 1035mm  
Great ergonomics combined with with great value and style. Self-adjusting synchronous mechanism, with the possibility of locking in four positions



**AVENIR TASK CHAIR**

**Castledex**  
490 x 440 x 1035mm  
Twin gas lift adjustable base with castors. High density moulded foam seat and back upholstered in standard commercial quality fabric.



**TEAM AIR TASK CHAIR**

**Castledex**  
490 x 460mm  
Heavy duty, fully loaded chair that can carry up-to 135kg and be the pride of your office for a warrantied period of 5 years.



**SPACE TASK CHAIR**

**Castledex**  
620 x 610 x 1030mm  
Forward thinking and ergonomically friendly, the Space chair will satisfy every user with a multitude of options on offer.



**MIRO TASK CHAIR**

**Castledex**  
490 x 440 x 1035mm  
Twin gas lift adjustable base with castors. High density moulded foam seat and back upholstered in standard commercial quality fabric.



**REXA TASK CHAIR**

**Castledex**  
480 x 460 x 590mm  
The REXA maintains a consistent square look throughout your office while giving your team members a chair that fits them individually.



**ALPHA TASK CHAIR**

**Castledex**  
480 x 450 x 590mm  
The best value AFRDI level 6 task chair on the market. Available in two or three lever, mid or high-back. Built in Australia from quality components.



**KRUZE BOARDROOM CHAIR**

**Boss Design**  
610 x 610 x 850mm  
Displaying a presence and panache that belies. This chair has the ability to complement a wide range of environments.



**BRUBEN BOARDROOM CHAIR**

**Castledex**  
490 x 440 x 1035mm  
Featuring a stylish aluminum armrest with polypropylene armrest cap. Italian leather upholstery and detailed stitching.



**MARC BOARDROOM CHAIR**

**Castledex**  
490 x 440 x 1035mm  
Showcasing flair and everyday practicality, Marc promises a comfortable seating experience throughout the working day.



**SAX BOARDROOM CHAIR**

**Castledex**  
560 x 550 x 1030mm  
When it comes to good looks, with its slim fitted leather upholstery, tapered chrome loop arms and thin line polished chrome base, Sax impresses.



**T50 SOFT BOARDROOM CHAIR**

**Fursys**  
622 x 595 x 917mm  
A versatile meeting chair available in customer specified fabric on a range of base options. Excellent comfort and suitable for long meetings.



**FOURCAST XL BOARDROOM CHAIR**

**Four Design**  
570 x 535 x 875mm  
Extreme durability through rigorous international tests which proves that this chair is great value for money. Perfect in exclusive meetings rooms.



**TULIP BOARDROOM CHAIR**

**Castledex**  
520 x 510 x 830mm  
A well-considered design with a proportioned combination of curves, straight lines, fluted and tapered profiles that raise the corporate profile.



**QUEEN UPHOLSTERED BOARDROOM CHAIR**

**Castledex**  
617 x 440 x 778mm  
Inner upholstered shell with plastic back. A well-considered design with a proportioned combination of curves, straight lines, fluted and tapered profiles that raise the corporate profile.



**HENDRIX MINI 5 STAR BOARDROOM CHAIR**

**Fineseat**  
610 x 620 x 910mm  
A chair that can be used at a desk on a tilt and caster base, and can be used as a meeting or breakout chair.



**FOUR ME BOARDROOM CHAIR**

**Four Design**  
740 x 640 x 1120mm  
Taking comfort and flexibility to a higher level: The FourMe® 66 is easy on the eye, and easy to move around.



**SABA BOARDROOM CHAIR**

**Castledex**  
600 x 600 x 875mm  
Classy, refined and offering superb comfort the Saba chair is available with several base options to cater for a vast array of spaces and uses.



**FORTYFOUR BOARDROOM CHAIR**

**Castledex**  
686 x 660 x 940mm  
Diverse by nature and contemporary by character, this revolutionary collection transforms the image of seating solutions within the office landscape.



**VERY CONFERENCE BOARDROOM CHAIR**

**Haworth**  
686 x 660 x 991mm  
Very Conference's minimal design focuses on user needs and allows Very to adapt and support many environments.



**LAYLA BOARDROOM CHAIR**

**Castledex**  
570 x 535 x 875mm  
Plastic upperbody fully upholstered with height adjustable mechanism, nylon base, wheels and aluminium arms.



**FOURSURE 66 BOARDROOM CHAIR**

**Four Design**  
520 x 440 x 1127mm  
The elegant and robust chair takes comfort and flexibility to a higher level, making it perfect for collaborative working platforms.



**QUEEN INNER UPH BOARDROOM CHAIR**

**Castledex**  
520 x 510 x 830mm  
A well-considered design with a proportioned combination of curves, straight lines, fluted and tapered profiles that raise the corporate profile.



**LUNAR BOARDROOM CHAIR**

**Go Home**  
475 x 480 x 825mm  
A flexible and versatile seating solution designed for both commercial, hospitality and residential environments.



**UNICA BOARDROOM CHAIR**

**Castledex**  
610 x 620 x 910mm  
A chair that can be used at a desk on a tilt and caster base, and can be used as a meeting chair, breakout or a restaurant dining chair.



**JUBEL BOARDROOM CHAIR**

**Castledex**  
520 x 520 x 830mm  
Suitable for conference, training and educational spaces with height adjustable gas lift and gentle controlled flex back





**FORSURE 88  
VISITOR CHAIR**

Four Design

525 x 530 x 840mm

Clean lines and carefully thought out construction. This perfect robust, stacking chair has endless colour combinations.



**FOURCAST SLED  
VISITOR CHAIR**

Four Design

525 x 520 x 845mm

Blends in perfectly in any canteen or conference facility. It shows how the skid frame chair is stackable, making it perfect.



**FOUR ME 88  
VISITOR CHAIR**

Four Design

490 x 440 x 1035mm

The chair perfectly suits any meeting or dining table where it will add remarkable comfort as well as an almost sculptural view exciting to the eye.



**VERY SIDE  
VISITOR CHAIR**

Haworth

686 x 660 x 991mm

The Very Side and Seminar chairs deliver international design with a smart, slender profile that celebrates their light scale and airy aesthetic.



**JUBEL  
VISITOR CHAIR**

Castledex

450 x 450 x 450mm

The modern design and diverse options suit a variety of interior spaces. Stackable up to 4 high, and is ideal for conferences.



**BEE  
VISITOR CHAIR**

Castledex

490 x 440 x 1035mm

A playful addition to the office and hospitality landscape. Its contoured seat and back provide maximum comfort.



**LUMIA  
VISITOR CHAIR**

Castledex

520 x 570 x 788mm

A brilliant, well-engineered, and multipurpose chair that's not only strong, but also lightweight. Bringing you ease to move around and stack them up.



**SPYDER  
TASK CHAIR**

Castledex

560 x 570 x 800mm

With an unmatched array of options, the innovative Spyder makes it easy to match a chair to a specific job function, office environment or aesthetic.



**LUNAR  
VISITOR CHAIR**

Go Home

530 x 560 x 785mm

Lunar is a flexible and versatile seating solution designed for both commercial, hospitality and residential environments.



**LAYLA  
VISITOR CHAIR**

Castledex

500 x 520 x 860mm

The seating range where this goes with that. A Versatile chair with many looks and a wonderful colour palette to choose from.



**MADI  
VISITOR CHAIR**

Castledex

490 x 440 x 1035mm

Sink into comfort and let the Madi Chair compliment any room with its classic tub design.



**CDX ONE  
VISITOR CHAIR**

Castledex

450 x 580 x 450mm

Consists of the highest levels of seating comfort with exemplary simple design. Perfectly suited to large spaces.



**FORTYFOR  
VISITOR CHAIR**

Castledex

630 x 580 x 780mm

High density moulded foam seat and back upholstered in standard commercial quality fabric. Aluminium base.



**UNICA SEAT PAD  
VISITOR CHAIR**

Castledex

560 x 560 x 790mm

Super comfortable polypropylene shell or upholstered in your choice of fabric or leather. Die-cast aluminium, steel and timber bases.



**UNICA UPHOLSTERED  
VISITOR CHAIR**

Castledex

630 x 580 x 740mm

Diverse by nature and contemporary by character, this revolutionary collection transforms the image of seating solutions within the office landscape.



**KOBI  
VISITOR CHAIR**

Castledex

490 x 530 x 830mm

Lightweight and durable, Kobi is stackable up to 25 high on a trolley, making it easy to manoeuvre and store away when not in use.



**POPPI  
DINING/BREAKOUT CHAIR**

Castledex

500x 520 x 790mm

With its clean lines and contemporary style, the Poppi chair enhances any space, from offices to hospitality environments.



**MAARI  
DINING/BREAKOUT CHAIR**

Haworth

520 x 560 x 850mm

Maari is based on a one-piece, delicately textured, molded shell that's the same for all chairs. Choose any base with the same shell.



**ESTEEM  
DINING/BREAKOUT CHAIR**

Apparent

510 x 510 x 720mm

The Esteem chair comfortably encapsulates, gently supporting you in a collection of carefully considered joinery.



**FOURCAST  
DINING/BREAKOUT CHAIR**

Four Design

515 x 500 x 850mm

A striking, streamlined form, remarkable comfort, and endless configurations, this chair has become a genuine design classic.



**HALO  
DINING/BREAKOUT CHAIR**

Castledex

435 x 450 x 770mm

Finely crafted, with a focal point on the arc form, a combination of solid American oak and circular steel tube.



**HOLLYWOOD  
DINING/BREAKOUT CHAIR**

Go Home

550 x 570 x 780mm

Designed to meld two wood varieties, solid wood and plywood to create a unique, stackable and extremely strong seating solution. Made from FSC certified American Oak.



**TED  
DINING/BREAKOUT CHAIR**

Castledex

515 x 520 x 800mm

A striking chair nuanced with soft lines and curves, from a contoured back to a classic round leg profile.



**FOURSURE44  
DINING/BREAKOUT CHAIR**

Four Design

515 x 530 x 840mm

Easy to stack, store, and maintain. The iconic chair is exceptionally comfortable and robust, making it the perfect choice for visitor seating.



**OKIDOKI  
DINING/BREAKOUT CHAIR**

Thinking Works

584 x 591 x 778mm

True to its laidback style, Okidoki provides plenty of flexibility in its shapes and finishes, with a sleek rounded design theme.



**VERY WIRE  
DINING/BREAKOUT CHAIR**

Haworth

584 x 591 x 778mm

Single high-strength polymer shell with intuitive recline and side-to-side torsional flex to increase mobility and comfort.



**MIM  
DINING/BREAKOUT CHAIR**

Castledex

430 x 500 x 760mm

Modern, with a neat, compact design, the Mim chair combines solid wooden beech legs with a durable polypropylene shell.



**CALVIN  
DINING/BREAKOUT CHAIR**

Castledex

485 x 500 x 810mm

With a focus on materiality and minimalism, this chair is a classic addition. Featuring a contoured seat and back, constructed of plywood.



**SHEEP  
DINING/BREAKOUT CHAIR**

Castledex

420 x 440 x 785mm

With an elegant ply and beech wood construction, the Sheep chair showcases the versatility of timber. Creating something that would be comfortable, gentle, and durable in its environment.



**MOU  
DINING/BREAKOUT CHAIR**

Castledex

535 x 536 x 750mm

Featuring a sleek metal frame and curved backrest, the Mou's silhouette ensures comfort and style.



**DAYTON  
STOOL**

District Eight

520 x 520 x 840mm

Crafted from natural materials. The backrest and seat are made of solid oak, a leather cushion and a tube steel frame legs to complete the design.

**KINK BAR CHAIR  
STOOL**

District Eight

510 x 640 x 1010mm

Offers a unique aesthetic in chair design. With its curved composite/veneer backrest, solid oak seat and steel frame with brass features.

**OKIDOKI  
STOOL**

Thinking Works

481 x 481 x 650mm

True to its laidback style, Okidoki provides plenty of flexibility in its shapes and finishes, with a sleek rounded design theme.

**LAYLA  
STOOL**

Castledex

560 x 550 x 1030mm

A versatile stool with many looks. With a wonderful colour palette to choose from, this chair can be personalised to your needs.

**ZORRO  
STOOL**

Castledex

470 x 490 x 885mm

This chair boasts an extra strong shell with a black or white powder coated steel frame and offers slimline padding in the upholstered version

**VERY  
STOOL**

Haworth

600 x 584 x 1773mm

Balances residential with office, craft with technology and clean geometry with contour and comfort.

**LEGLESS  
STOOL**

Josh Carmody

410 x 410 x 750mm

The engaging form of the bar stool originally released in solid timber, translated into a bent steel tube design.

**HOLLYWOOD  
BAR STOOL**

Go Home

500 x 450 x 930mm

The stool was formulated from the idea of melding two FSC certified American Oak solid wood and plywood timber varieties.

**GRILLE  
STOOL**

Go Home

650 &amp; 750mm

A stool of generous proportions and comfort. Designed with a combined back rest/ lifting point with clean lines and comfort in mind.

**FIN  
STOOL**

Apparentt

430 x 430 x 650mm

Fin is a playful stool design incorporating flowing junctions and a collection of slimming contours, resulting in an elegant and varied profile.

**AUGUST  
STOOL**

Apparentt

600 x 600 x 875m

Robustly built, yet gracefully light in its design. The combinations of thick and thin planes and the subsequent collection of spaces.

**HALO  
STOOL**

SBV

415 x 650 x 1000mm

Finely crafted, with a focal point on the arc form, a combination of solid American oak and circular steel tube.

**FLARE  
STOOL**

Haworth

480 x 590 x 700mm

Defined by its fine stainless steel frame and mesh construction, Flare is a premium and sophisticated outdoor collection..

**FOURSURE 105  
STOOL**

Four Design

525 x 550 x 1115mm

Unobtrusive yet distinct. The sublime comfort and harmonious expression of the chairs encapsulate the ideals of modern design with a human touch.

**OTIS  
STOOL**

Arko

330 x 330 x 650mm

Defined by unique split two-piece top and seat design. Part of a simple yet sophisticated range of outdoor furniture made entirely in stainless steel.

**DEL TORRO  
STOOL**

Arko

350 x 350 x 750mm

This beautifully simple design takes its cues from the classic forms of the Bauhaus movement. Designed with small urban spaces in mind.

**TED  
STOOL**

Castledex

490 x 490 x 965mm

A striking stool nuanced with soft lines and a contoured back to a classic round leg profile, which offers aesthetic sensibility from every angle.

**Akron Stool**

District Eight

68 x 68 x 100mm

Incorporating back and armrests into this contemporary iteration of the industrial task stools, the Akron stools feature oak backrest, brass detailing and hand stitched leather seats with a frame of cast iron and tube steel.





**POPPI  
OUTDOOR CHAIR**

Castledex

500 x 520 x 790mm

With its clean lines and contemporary style, this chair enhances any space. Capped with a contoured back design for comfortable support.



**GRILLE  
OUTDOOR CHAIR**

Go Home

480 x 500 x 780mm

This stackable chair, utilises innovative 3D bending tube technology and an open mesh seat and back rest, to ensure a superior comfort level.



**NET  
OUTDOOR CHAIR**

Nardi

605 x 585 x 800mm

Net means refined relaxation: a single-body chair in fibreglass resin, decorated with a radial pattern of square perforations.



**KOMODO  
OUTDOOR CHAIR**

Nardi

790 x 780 x 880mm

Relaxing armchair with armrests in fibreglass resin, with padded elements. Available separately or as a compositional element of larger sets.



**TRILL  
OUTDOOR CHAIR**

Nardi

585 x 535 x 825mm

Fibreglass resin chair with armrests and a harmoniously sculptural design. Uniformly colored fibreglass polypropylene resins with UV additives.



**POGGIO  
OUTDOOR CHAIR**

Nardi

440 x 490 x 440mm

A footrest/stool made of fibreglass resin and featuring a perforated frame decorated with a square pattern



**CAPRI  
OUTDOOR CHAIR**

Castledex

580 x 600 x 855mm

Very comfortable and robust, this chair is a great option for any space indoors or outdoors. With a solid steel structure.



**AIR XL  
OUTDOOR CHAIR**

Castledex

570 x 600 x 815mm

Extraordinary strength is due to the entire chair being one-piece injection moulded polypropylene, the legs reinforced with glass fibre.



**CADREA  
OUTDOOR CHAIR**

Castledex

425 x 425 x 655mm

A durable Polypropylene Fibreglass bat stool available in black and white. UV resistant and conveniently stackable.



**KOMODO SOFA  
OUTDOOR CHAIR**

Nardi

2900 x 1540 x 1880mm

Inspired by tree branches, this modular system of upholstered seats in fibreglass resin for outdoor use, offering great composition flexibility.



**STELLAR  
OUTDOOR CHAIR**

Castledex

545 x 535 x 920mm

A timeless design meant to be used on a daily basis, where its stellar lines serve both functional and aesthetic purposes. A shape conceived from childhood memories.



**DOGA  
OUTDOOR CHAIR**

Nardi

600 x 565 x 835mm

Fresh, light and ergonomic, this chair is for outdoor use and made of fibreglass resin. It is inspired by a slatted design given a contemporary twist by the designer Raffaello Galotto.

**SALLY OTTOMON**

+Halle

460 x 460 x 400mm

A versatile stool available in 4 different heights. The compact size and low weight makes it easy to move around and increases its functionality.

**CHICK POUF OTTOMON**

Haworth

480 x 500 x 780mm

Brought to life by Patricia Urquiola and Haworth, Openest lounge furnishings bridge the unexpected and familiar—bringing a distinctly new perspective.

**DRUM OTTOMON**

Castledex

600 x 600 x 450mm

A neat size and simple design, the Drum Ottoman is perfect for every space, adding a touch of luxe, extra seating or just somewhere to put your feet up.

**TEARDROP OTTOMON**

Castledex

450 x 450 x 450mm

Not just any ottoman. The unique design of the Teardrop ottoman will create style and interest in any environment.

**ISLAND OTTOMON**

+Halle

1630 x 1350 x 820mm

A human-centered bench system designed to meet the flexible requirements of daily use in modern soft contract environments.

**ARI DAYBED OTTOMON**

SBW

2000 x 500 x 415mm

Ari's clean and modern presence is accentuated by the daybed's single long seat cushion. Ari is an absolute charmer in any context.

**MAYA OTTOMON**

Castledex

655 x 500 x 365mm

With its continuous frame and choice of pink or blue-grey upholstery, Maya looks and feels luxurious. Black powder coated steel frame.

**STAX OTTOMON**

Castledex

375 x 375 x 450mm

Lending themselves to a variety of interior styles, Stax ottomans are flexible in use, function and expression. Durable foam padding.

**PEBBLE OTTOMON**

Castledex

900 x 900 x 450mm

A functional ottoman that is ideal for workplaces aspiring to a creative environment. Designed for comfort and functionality.

**VASE OTTOMON**

Castledex

600 x 600 x 450mm

Available in a range of sizes. Perfect addition to any office, educational, breakout, large reception space and informal area.

**ISLEY OTTOMON**

Castledex

2080 x 980 x 380mm

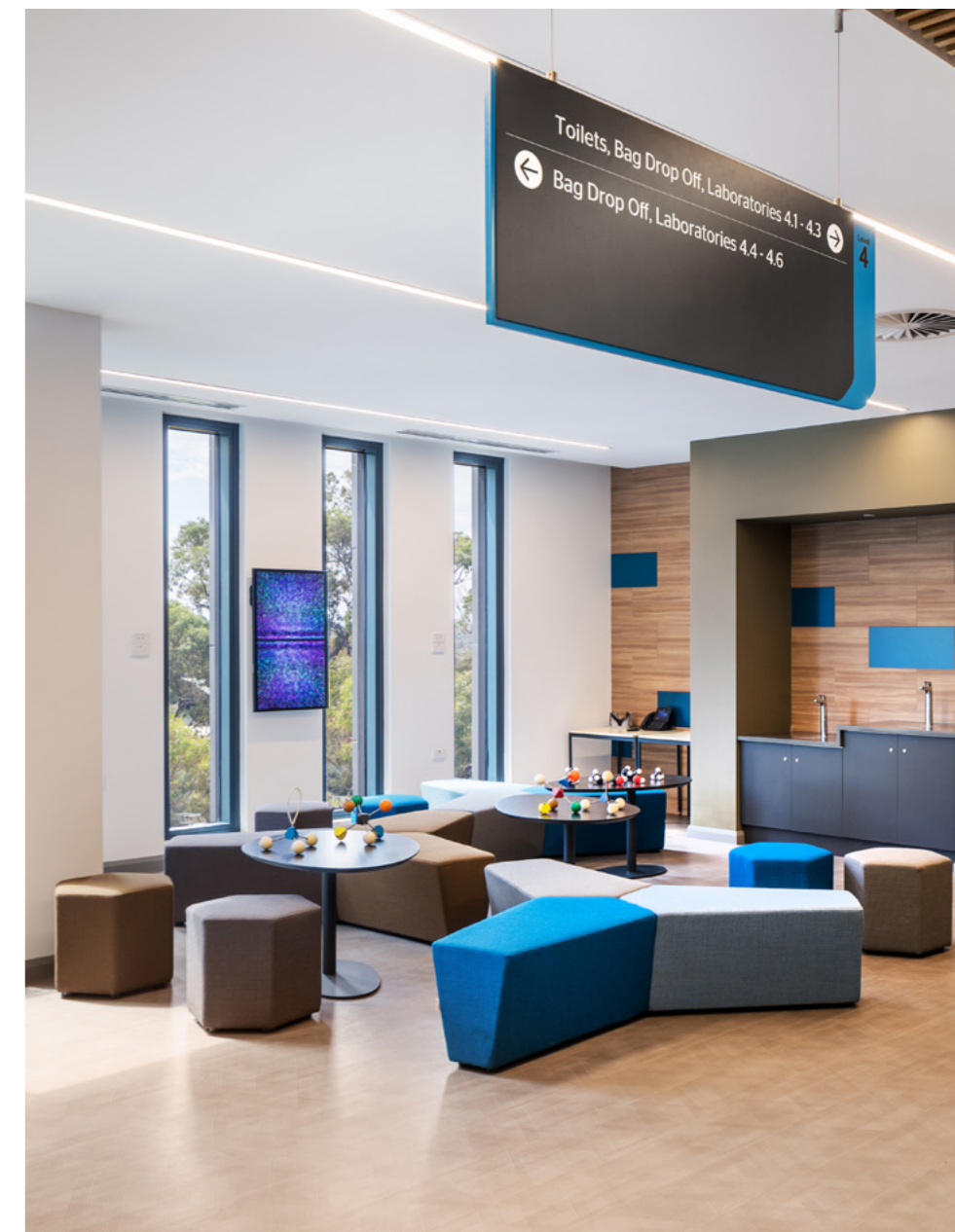
Can be used as free standing units or linked together. Unique asymmetric shapes are nicely turned to symmetry when you multiply the units.

**LOTUS POUF OTTOMON**

Castledex

1360 x 1190 x 430mm

Combines original design with versatile functions. The structure is well-built with high-quality wood and is available in a wide range of materials



**COOPER  
LOUNGE CHAIR**

Castledex

660 x 470 x 840mm

Elegant and sophisticated, the Cooper chair makes a stunning addition to the corporate landscape. This armchair offers long-lasting comfort and support with its high density foam padding.

**RAFT  
LOUNGE CHAIR**

Fursys

650 x 680 x 850mm

Suitable for an open meeting space, casual collaboration space or somewhere to relax in comfortable surroundings. Detailed exposed wood frame with soft padded seat and back cushions

**FOURME  
LOUNGE CHAIR**

Four Design

585 x 541 x 774mm

A perfect mix between corporate necessity and informal elegance. The chair is ideal for your lobby or lounge area.

**ANNETTE  
LOUNGE CHAIR**

Castledex

620 x 600 x 610mm

Stylish mid back, Italian made and designed by Rossetto. Available in 6 different base options and upholstered in the fabric of your choice.

**DELPHI  
LOUNGE CHAIR**

Castledex

625 x 630 x 830mm

An elegant and soothing chair, available with multiple base types to suit almost any application. Compact overall dimensions.

**POPPY  
LOUNGE CHAIR**

Haworth

500 x 520 x 790mm

With its clean lines and contemporary style, this chair enhances any space, from offices to hospitality environments.

**DISHY  
LOUNGE CHAIR**

Four Design

781 x 654 x 256mm

A stylish solution to any corporate environment. The generous seat and premium quality foam provide a high level of comfort. High or low back options available.

**HARC  
LOUNGE CHAIR**

Four Design

656 x 637 x 870mm

A lounge chair and a meeting chair scaled for working at a table. With the wrap around acoustic high backs, the chairs become secluded spaces.

**ARLO  
LOUNGE CHAIR**

Castledex

690 x 770 x 760mm

Embracing soft curves and chic details, this chair offers an effortless aesthetic to the contemporary workspace.

**LUCA  
LOUNGE CHAIR**

Castledex

660 x 850 x 890mm

Eminence and modern appeal are the hallmark of the contemporary Luca chair. Available in grey, charcoal or navy upholstery.

**CLUB  
LOUNGE CHAIR**

Castledex

850 x 860 x 870mm

Uncompromised comfort and intriguing visuals are the hallmarks of the Club lounge. Equipped with a grey commercial grade fabric.

**HENDRIX  
LOUNGE CHAIR**

Castledex

700 x 750 x 1070mm

Suited to a lounging area available with a higher back and a rounded headrest that offers privacy for making calls in larger public space areas.

**JADE  
LOUNGE CHAIR**

Castledex

686 x 660 x 991mm

A highly versatile lounge applicable to both commercial and residential settings. Choose a timber base option, or the option without feet.

**SWELL  
LOUNGE CHAIR**

Castledex

520 x 510 x 830mm

The Swell's generous proportions ensure it is a statement in any space, while its gentle curvature and welcoming Boucle upholstery add an unmatched relaxed tone.

**LILI  
LOUNGE CHAIR**

Castledex

882 x 706 x 720mm

Thick back and cushion with a deep seating area makes a smooth and comfortable option, available in a range of colours and fabrics.

**OSCAR  
LOUNGE CHAIR**

Castledex

590 x 570 x 760mm

A beautifully handcrafted low back chair, which focuses closely on simplicity in both form and materials. Perfect as an occasional lounge chair.

**AQUILA  
LOUNGE CHAIR**

Castledex

540 x 475 x 795mm

Ideal for both informal and formal reception, visitor, waiting and breakout areas, the Aquila brings a warm and welcoming atmosphere.

**OTTO  
LOUNGE CHAIR**

Castledex

610 x 680 x 820mm

With its clean, simplified and beautifully balanced form, this chair can be translated into an array of spaces within residential and commercial contexts.

**MUSE  
LOUNGE CHAIR**

Castledex

520 x 440 x 1127mm

Flowing lines create a calming aesthetic. With superb comfort the Muse is the perfect chair for a multitude of different spaces.

**BEOS  
LOUNGE CHAIR**

Castledex

765 x 775 x 700mm

The backrest and armrest are designed as an integrity following an attachable headrest.





**PAX ANTHEM SOFA**

**Castledex**  
1450 x 750 x 1400mm  
Quiet space seating made in Australia. Perfect custom acoustic seating option for corporate spaces. Timber frame with master craftsmanship.



**HALO SOFA**

**SBW**  
2450 x 900 x 790mm  
With reference to the arc form, and utilising tubular construction, the Halo sofa is an exemplar of adaptable and intelligent design, able to be styled across multiple spaces.



**HUGO SOFA**

**Castledex**  
1400 x 770 x 415mm  
A contemporary lounge with a modest shape and solid proportions, Hugo exudes strong character that does not compromise on aesthetics or comfort.



**DISHY SOFA**

**Four Design**  
450 x 450 x 450mm  
This generous seat and premium quality foam provide a high level of comfort, while the frame gives the acclaimed design a new classic twist.



**HARC SOFA**

**Four Design**  
425 x 425 x 655mm  
Ideal choice as it cuts out the surrounding noise and commotion from the office. Likewise, it offers a warm, cosy and inviting atmosphere.



**TEX SOFA**

**Castledex**  
1440 x 770 x 760mm  
Relax in style with this modern interpretation of the classic retro lounge chair. Its smooth rounded contours and deep padded cushions ensure comfort and a choice of upholstery.



**MAYA SOFA**

**Castledex**  
1245 x 710 x 755mm  
A modern interpretation of the classic retro lounge. Its smooth contours and deep padding ensure comfort and visual appeal. Full fabric upholstery.



**FOUR US SOFA**

**Four Design**  
1500 x 750 x 950mm  
Easy to keep clean and maintain; it's really comfortable, but most importantly, it is inclusive. Created with your comfort in mind.



**SMILE SOFA**

**Fuse**  
1485 x 780 x 790mm  
Smooth elegant lines, open and friendly, Smile's comfortable curves are an open invitation. At home in commercial and residential spaces.



**FATTY SOFA**

**Castledex**  
3035 x 680 x 730mm  
The Fatty sofa has a wide, low back and armrests and a deep seat. The combination of elegant and practical features.



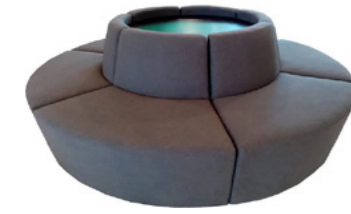
**LUNA SOFA**

**Castledex**  
2150 x 650 x 725mm  
The close combination of back and armrest cushion makes integral line simple and elegant. This sofa will fill a room for all your dreams.



**NEST SOFA**

**+Halle**  
1600 x 840 x 1220mm  
The Nest sofa is the anchoring piece in a growing series of upholstered sofas and chairs, serving informal, accessible spaces.



**LAGOON  
MODULAR LOUNGE**

Castledex  
Up to 2000mm Internal Radius  
Modular seating and matching Lagoon armchair in medium or high back with dividers as requested. Various shaped and sized units available.



**FOUR LIKES  
MODULAR LOUNGE**

Four Design  
Fit to get the very best out of the built environment; the system encapsulates a variety of modules adaptable for different spaces and needs.



**ARI  
MODULAR LOUNGE**

SBW  
Ari's clean and modern presence is accentuated by the sofa's single long seat cushion and integrated back cushion.



**LUNA  
MODULAR LOUNGE**

Castledex  
While supporting the entire seat, the close combination of back and armrest cushion makes integral line simple and elegant.



**OLA  
MODULAR LOUNGE**

Castledex  
High back models offer a secluded place of comfort to get away from the buzz of the open office. Ola modules are great for collaboration zones.



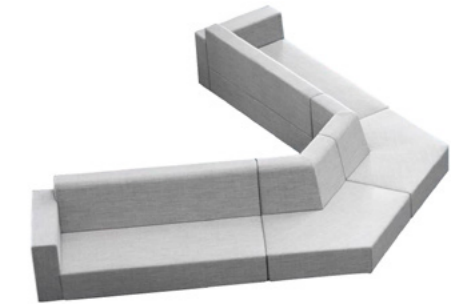
**EVOKE  
MODULAR LOUNGE**

Castledex  
Whatever the occasion, make sure your lounge room is equipped to handle it. A modular lounge is all you need.



**FLUME  
MODULAR LOUNGE**

Four Design  
Ideal choice as it cuts out the surrounding noise and commotion from the office. Likewise, it offers a warm, cosy and inviting atmosphere.



**SKYLINE  
MODULAR LOUNGE**

Four Design  
Designed and developed to provide an intelligent planning solution for all environments. Recognising that we work in predominantly rectangular spaces.



**HARC  
MODULAR LOUNGE**

Four Design  
The Harc family is the ideal choice for these spaces as it cuts out the surrounding noise and commotion from the office.



**FATTY  
MODULAR LOUNGE**

Castledex  
The sofa body is form of pine frame and plywood, fill in high resilience. Base is electrostatic powder coating.



**FOUR LIKES  
MODULAR LOUNGE**

Four Design  
Created with comfort in mind, form a place with the best conditions for a relaxing break or a casual meeting. Whether it is a modern working environment, break-out area, or hall, this system is created for today.



**MYRAID  
MODULAR LOUNGE**

Boss Design  
With the increasing need for your furniture to be flexible, Myriad allows you to create a comfortable meeting area, private huddle space or a stunning island. The possibilities are truly infinite with this versatile range.





# Desks & Workstations

Workstations

Screens & Accessories

2021 / 2022 COLLECTION



**ASPECT WORKSTATION**

Castledex

There is no reason why your office furniture should not be as architecturally appealing as your offices – Aspect is a statement in style.



**AVANTI WORKSTATION**

Castledex

A modular system that suits all design configurations and can be reconfigured to the ever-changing commercial office environment.



**ASCEND WORKSTATION**

Castledex

Standing up at work is more than just a trend, it is also a healthier option. Move up another level with a sit/stand vertical adjustment range.



**GEN-Y WORKSTATION**

Castledex

Based on a simple aesthetic of beautifully finished details and carefully selected materials. Offers a wide variety of combinations.



**KEYWORK SPINE WORKSTATION**

Castledex

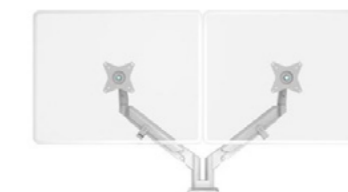
Combining practical desk space with useful storage the Keywork Spine units create harmony and balance in the workplace.



**SOFTWIRING WORKSTATION ACCESSORIES**

Castledex

Ordinary duty leads are used for power distribution within furniture. Softwiring is a plug-and-play system which supersedes hardwiring.



**VADER WORKSTATION ACCESSORIES**

Castledex

Various Components  
Vader's gas spring perfectly counterbalances the weight of your monitor while allowing the user to freely adjust for an optimal ergonomic position.



**GEN X WORKSTATION**

Castledex

Developed to the best of European quality and design by the use of rectangular tube sections robot welded with multiple angles.



**C-LEG WORKSTATION**

Castledex

Perfect for all office situations from single standing desks, against walls or workstations clusters configured with screens.



**OVATION WORKSTATION**

Thinking Works

Designed with movement in mind, Ovation draws inspiration from iconic transport systems of the world.



**VELO WORKSTATION**

Castledex

Combining practical desk space with functional storage, an essential addition to any office. Velo Spine offers a wealth of options.



**CPU HOLDER WORKSTATION ACCESSORIES**

Castledex

The CPU30 holder effectively raises the CPU tower off the floor and stores the CPU in a safe position under the work surface.



**ECHOPANEL WORKSTATION SCREENS**

Castledex

Screens attach to various desk thicknesses using unique clamps, and can easily be switched from one desk to another.



**35MM FRAMED SCREEN WORKSTATION SCREENS**

Castledex





# Tables

Meeting / Boardroom

Training

Coffee / Side Tables

Dining / Breakout

Bar Tables

Outdoor Tables

2021 / 2022 COLLECTION



**DART MEETING/BOARDROOM TABLE**

Castledex  
900 - 1500mm Diameter  
Boasting smooth, clean-cut geometric lines and structural rigidity, Dart boardroom tables thrive in environments with passionate moments.



**VELO MEETING/BOARDROOM TABLE**

Castledex  
900 - 1500mm Diameter  
Combining clean lines with a slimline tapered profile, the Velo table is designed for all levels of communication and management tasks.



**GEN - X ROUND MEETING/BOARDROOM TABLE**

Castledex  
750 - 900mm Diameter  
An elegant minimalistic functional and unique table system. With rectangular tube sections robot welded in multiple angles to showcase a collection.



**GEN-X MEETING/BOARDROOM TABLE**

Castledex  
2400 x 1200 - 1400 mm  
Features include white, black or custom colour legs, various top styles and finishes and in desk power boxes with all the modern electronic attachments.



**PLATEAU MEETING/BOARDROOM TABLE**

Go Home  
2400mm x 1200mm  
Designed to provide a large multi-use surface. A sweeping clean surface ready for discussion, productivity with colleagues.



**I.AM MEETING/BOARDROOM TABLE**

Thinking Works  
1300 x 1200 x 720mm  
A totally flexible and versatile table base that provides a complete family of product options for the commercial environment.



**EONA MEETING/BOARDROOM TABLE**

Thinking Works  
1400 x 4800 x 720mm  
A modular table system manufactured from post consumer recycled materials. Outstanding environmental credentials and timeless design.



**FOUR MEETING MEETING/BOARDROOM TABLE**

Four Design  
1400 x 1250 x 815mm  
Helps you in the right direction. The minimalist yet stylish design, make no noise in the meeting room. Available in three different sizes.



**DIVA TABLE MEETING/BOARDROOM TABLE**

Thinking Works  
4000 x 1400 x 740mm  
Striking wooden exterior and a host of ingenious design elements, cleverly concealed within the solid timber build and die cast aluminium features.



**FOUR MAT MEETING/BOARDROOM TABLE**

Four Design  
3000 x 1250mm  
This light and airy conference table has a motorised adjustable height feature which makes a world of difference, when in those long meetings.



**COLUMN MEETING/BOARDROOM TABLE**

Klaro  
720 x 1800 x 2400mm  
The monolith visual language is achieved by using mild steel tube legs, landing itself perfectly to more organically shaped configurations, where required.



**CONUS MEETING/BOARDROOM TABLE**

Klaro  
720 x 1000 - 1200mm Diameter  
Rolled sheet steel conical base with 4mm thick steel or preferred melamine / veneer option top.

**I.AM** Thinking Works

I.AM folding tables are offered as a tilt-top stacking option as part of the flexible and versatile I.AM table base system, providing a complete family of product options for the commercial environment. Suitable for hot-desking, breakout areas and offices that require constant change.

**ZETA** Castledex

The Zeta base can be used for tops 1500-2100 mm long and 600-900 mm deep. It features lockable castors. Available in both white and black powdercoat.

**LOGIC** Castledex

Easy to store and create extra space. This flip style table is perfect for training rooms, meeting rooms and cafeterias. These tables can be easily moved around with heavy duty lockable castors.

**FOUR FOLD** Four Design

Enter a product that is equal parts timeless design and smart engineering: The four-legged flip-top FourFold® table never stops generating intrigue. So easy to handle. So flexible. Fit for various occasions, room settings, the FourFold® is the modern magic of multipurpose tables.

**OKIDOKI** Thinking Works

Get creative with timber-look powdercoated legs set against the seasonal colours of Okidoki's feet and beams, the decision to complement or contrast is all yours. So cast off the formalities and relax – Okidoki is here to lighten the mood.

**FOURREAL FLAKE** Four Design

Create and recreate, again and again. These innovative tables are built on the ideas of democratic design and developed to meet the need for agile and flexible solutions for people to meet at eye level. The Four@Real 741 is an inspiring framework for collaboration and multipurpose use..





**NEST  
COFFEE/SIDE TABLE**

+ Halle

410 x 900mm Diameter

A warm and textured table that ages beautifully. The curved surface is robust and convivial, a movable table in a natural material.



**OSCAR  
COFFEE/SIDE TABLE**

Castledex

390 x 800mm Diameter

Strong geometric lines and a keen focus on composition elevate the Oscar coffee table to timeless status.

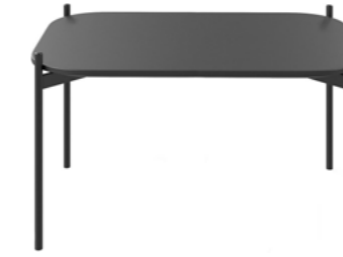


**DART  
COFFEE/SIDE TABLE**

Castledex

450 x 700mm Diameter

Eye-catching to look at with its three splayed steel legs, the Dart coffee table has a modern aesthetic that suits anywhere your imagination can place it.

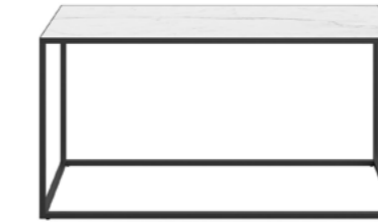


**MAYA  
COFFEE/SIDE TABLE**

Castledex

750 x 500 x 450mm

This minimalist coffee table's thin black powder coated frame and defined top make it the perfect piece to any seating ensemble.



**FELIX  
COFFEE/SIDE TABLE**

Castledex

900 x 400 x 450mm

Refined steel and an organic stone palette create an eclectic mix that is modern and enduring. Featuring a black powder coated square frame.

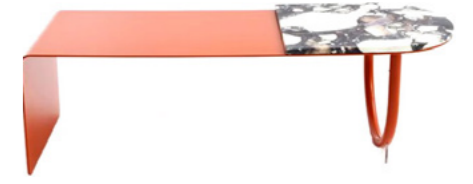


**ESTEEM  
COFFEE/SIDE TABLE**

Apparentt

1400 x 700 x 450mm

A simple, solid timber coffee table. This piece is both elegant and distinctive, due to its three-legged asymmetrical frame.



**HALO  
COFFEE/SIDE TABLE**

SBW

1250 x 450 x 375mm

Constructed from circular steel tube has been used as the structural, the unifying element of the collection is the arc form.



**STILT  
COFFEE/SIDE TABLE**

District Eight

900 x 900 x 310mm

The Stilt table is structurally refined yet also accentuated by the pleasing charms of its materials. Minimal in form, it offers versatility.



**ENZO  
COFFEE/SIDE TABLE**

Castledex

450 x 600mm Diameter

Boasting a chic contemporary aesthetic, Enzo tables are perfectly modern and supremely versatile.



**ACROSS  
COFFEE/SIDE TABLE**

Apparentt

1000 x 1000 x 400mm

Form following function, where joinery and timber meet in mutual benefit. A geometric base of varied symmetry, minimal lines, angles and joinery.



**TULIPA  
COFFEE/SIDE TABLE**

Go Home

800 x 800 x 300mm

Natural Oak finish - design by Marcel Sigel for Go Home Designed in Australia, the collection takes clear reference from the petals of the tulip flower.



**LAYA  
COFFEE/SIDE TABLE**

SBW

800 x 405mm Diameter

Radiates a sophisticated simple beauty. Can be individually placed to form an elegant coffee table or occasional side table.



**OTTO  
COFFEE/SIDE TABLE**

SBW

500 x 450mm Diameter

With its clean and simplified form, Otto exudes both functionality and versatility. Suitable for both indoor and outdoor applications.



**BYTE  
COFFEE/SIDE TABLE**

Castledex

1040 x 750 x 700mm

Futuristic styling with an off-centre tubular stem, but serving a dual purpose of adaptability as an occasional writing surface or laptop stand.



**HALO  
DINING/BREAKOUT TABLE**

Castledex

700mm Diameter

Featuring a robust circular base that contains adjustable levelling feet, these tables can cope with any amount of work you care to throw at them.



**STYLUS  
DINING/BREAKOUT TABLE**

Pedrali

400 x 690mm Diameter

A harmony of curved lines characterizes Stylus table in all its components. Round, powder coated, sand-blasted cast-iron base.



**OTTO  
DINING/BREAKOUT TABLE**

SBW

500 x 450mm Diameter

With its clean and simplified form, OTTO exudes both functionality and versatility. Suitable for both indoor and outdoor applications.



**YPSILON  
DINING/BREAKOUT TABLE**

Pedrali

585 x 585 x 730mm

When the sophisticated aluminium die-casting technology meets the design, the result is Ypsilon table collection, lightweight and easy to handle.



**BOLD  
DINING/BREAKOUT TABLE**

Pedrali

700 x 530 x 530

Linearity and minimalism together with an immediate graphic touch, these are the key elements that define Bold table collection.



**FOUR REAL FLAKE  
DINING/BREAKOUT TABLE**

Castledex

1000 x 2000mm

These innovative tables are built on the ideas of democratic design and developed to meet the need for agile and flexible solution.



**FOUR REAL A  
DINING/BREAKOUT TABLE**

Four Design

1720 x 1868 x 900mm

A true Pièces de résistance in any communal space. This table simply draws you in engaging conversation.



**NEST TABLE  
DINING/BREAKOUT TABLE**

+ Halle

1600 x 700 x 750mm

Designed with hospitality and corporate environments in mind, this fully weatherproof range is made from hardwearing zinc plated steel.



**OSCAR  
DINING/BREAKOUT TABLE**

SBW

730 x 1600mm Diameter

A beautifully crafted and refined design, focusing closely on simplicity in both form and materials. Radiating sophisticated simplicity.



**OTTO LOW  
DINING/BREAKOUT TABLE**

Castledex

2400 x 1200 x 750mm

The minimalist geometric lines alleviate the concreteness of its 'spatial identity', making it more flexible in collocation with the space it occupies.



**PLATEAU ROUND  
DINING/BREAKOUT TABLE**

Go Home

720 x 1200mm Diameter

This table was designed to provide a large multi-use surface. A sweeping clean surface ready for inspirational conversation over dinner with friends.

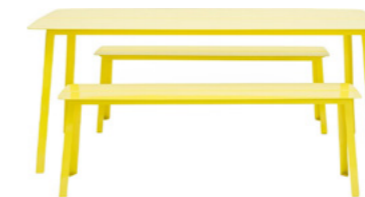


**STACKING  
DINING/BREAKOUT TABLE**

District Eight

3000 x 1000 x 740mm

Engineered from the diligent construction of the Stacking Collection, this table embodies the collection's distinct versatile functions.



**OTIS TABLE  
DINING/BREAKOUT TABLE**

Arko

1800 x 800 x 720mm

Designed with hospitality and corporate environments in mind, this fully weatherproof range is made from hardwearing zinc plated steel.



**NEST TABLE SYSTEM  
DINING/BREAKOUT TABLE**

+ Halle

2010 x 1400 x 700mm

The high and low tables feature a lock-in, tubular solution, which joins together a growing, perhaps even swaying loop or endlessly configured table.



**GEN-X TALL  
BAR TABLE**

Castledexi

2000 x 800 x 750mm

Made in Portugal with rectangular tube sections robot welded in multiple angles to showcase a distinctive eye catching collection of tables.

**FOUR REAL 90  
BAR TABLE**

Four Design

585 x 585 x 900mm

With a focus on function and technique, the table is designed with a simple expression paired with subtle yet great engineering.

**OTTO BAR TABLE  
BAR TABLE**

Castledex

720 x 1200mm Diameter

The range consists of a table series offering a solution to cafe, meeting and breakout spaces.

**S17  
BAR TABLE**

Castledex

800 x 800 x 1000mm

Defined by its casual modern form and refined detail, the S17 bar table offers flexibility and style. Spanning commercial to residential applications.

**HALO  
BAR TABLE**

Castledex

1050 x 800mm Diameter

Featuring a robust circular base that contains adjustable levelling feet, these tables can cope with any amount of work you care to throw at them.

**YPSILON BAR  
BAR TABLE**

Pedrall

1100 x 660mm Diameter

When the sophisticated aluminium die-casting technology meets the design, the result is Ypsilon table collection, lightweight and easy to handle.

**OTIS  
BAR TABLE**

Arko

750 x 750 x 950mm

Designed with hospitality in mind, this weatherproof range is made from stainless steel and available in a range of texture powder-coated colours.

**AGENT BISTRO  
BAR TABLE**

Boss Design

740 x 1400mm Diameter

An incredibly hard-wearing and robust construction. This simple yet functional bistro table is constructed in either solid Vic Ash or American Oak timber.

**NEST HIGH ROUND  
BAR TABLE**

+ Halle

1400 x 700 x 450mm

A round modern table for a large range of different spaces. The expression is light, Nordic and contemporary.

**FOUR REAL A 90  
BAR TABLE**

Four Design

1465 x 800 x 1721mm

A true Pièces de résistance in any communal space. This table simply draws you in. Into engaging conversation, into contemplation.

**FLARE  
BAR TABLE**

Arko

700 x 700 x 1000mm

Featuring a stunning array of lines visible through its flattened steel mesh top, this tables is a fresh interpretation of a classic archetypal form.

**NEST SYSTEM  
BAR TABLE**

Plue Halle

100 x 140 x 210

From the outset, the System Tables, were designed for the purpose of being flexible enough to withstand change.





**WIZ  
OUTDOOR TABLE**  
Castledex  
800 x 800 x 700mm  
Marrying a timeless and universal base with unique top finishes, Wiz invigorates life into hospitality and breakout areas alike.



**GRILLE  
OUTDOOR TABLE**  
Go Home  
700 x 700 x 700mm  
A minimalist design solution for any commercial or residential environment. Paired with a matching colour laminate table top surface.



**GRILLE RESIDENTIAL  
OUTDOOR TABLE**  
Go Home  
1050 x 800mm Diameter  
A sleek and curved tubular steel design, by Marcel Sigel, the Grille residential table is a focal point of any outdoor or indoor environment.



**BOLD  
OUTDOOR TABLE**  
Pedrali  
730 x 700mm Diameter  
A table with X-shaped sand-blasted cast-iron base and steel tube column, available combined with tops of different sizes and finishes.



**S17  
OUTDOOR TABLE**  
Arko  
720 x 800mm Diameter  
Spanning commercial to residential applications including hospitality, breakout and balconies. Equally suited to indoor use.



**STEP  
OUTDOOR TABLE**  
Nardi Outdoor  
765 x 605mm Diameter  
Fibreglass low table with round box top characterised by small decorative perforations, which also function effectively as drainage.



**FLARE  
OUTDOOR TABLE**  
Arko  
700 x 700 x 1000mm  
A beautifully crafted and refined design, focusing closely on simplicity in both form and materials. Radiating sophisticated simplicity.



**IKON  
OUTDOOR TABLE**  
Arko  
1060 x 420mm Diameter  
Ikon speaks the language of architecture in its highest expression of simplicity and elegance. Poseur table with conical polyethylene base.



**OTIS  
OUTDOOR TABLE**  
Arko  
800 x 800 x 720mm  
Designed with hospitality and corporate environments in mind, this range made is from stainless steel and available in a range of colours.



**ARKI TABLE  
OUTDOOR TABLE**  
Pedrali  
2000 x 2400 x 3000mm  
Arki-Table is linear and rigorous from a structural point of view, but at the same time versatile and designed for different uses.





# Storage

Shelving

Cabinets

Lockers

2021 / 2022 COLLECTION



**RUT  
SHELVING**  
Castledex

Shelves fit into place using strong shelf clips without the use of nuts, bolts or tools allowing easy assembly and adjustment. Available in double and single sided configuration



**LONGSPAN  
SHELVING**  
Castledex

Heavy duty storage capacities from 250Kg to 700Kg per shelf. Shelf levels adjust on 50mm increments and include safety locking pin.



**PALLET RACKING  
SHELVING**  
Pallet Racking

APEX Pallet Racking fully complies with the latest Australian racking code AS 4084-2012 for steel storage racking.



**LIBRARY  
SHELVING**  
Access Office Industries

Designed to hold up to the heaviest use and still maintain its great looks. All shelving components are powder coated with a paint finish.



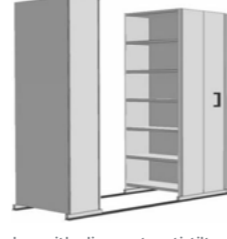
**GONDOLA  
SHELVING**  
Flowsell

Heavy duty with an 80kg load rating. The shelf management of a static flat shelf can be significantly improved by fitting Flowsell Mounting.



**WIRE GRID  
SHELVING**  
Castledex

Fully welded steel corners make this shelving very strong. The solid roll formed frame gives a clean look as well as price.



**EZI-SLIDE  
SHELVING**  
Castledex

Incorporates low profile tracks, with discreet anti-tilt mechanism, to reduce the chance of operator strain and loads imposed on the floor.



**POST  
SHELVING**  
Castledex

Mantova's Post Shelving with removable shelves have been making life easier for thousands of Australian businesses for more than a decade..



**M SPAN  
SHELVING**  
Castledex

This shelf is designed to last a lifetime for an affordable price. Made by over moulding a sub frame with Food Grade Polypropylene.



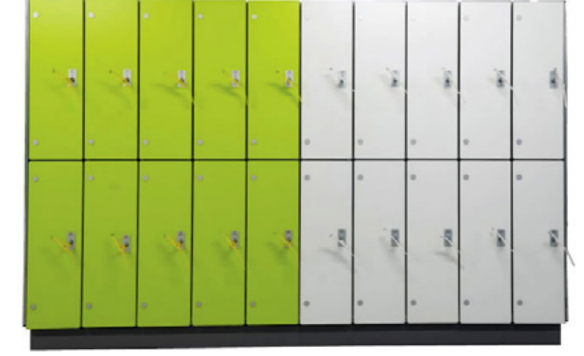
**CAMPACTUS  
SHELVING**  
Mantova

Ideal for wet areas, Top Track. Provides clear uninterrupted floor space for cleaning and trolley access. Mobile assemblies fixed to bases.



**STEEL** Castledex

Designed to securely store personal items of varying sizes. Each locker can function as a stand alone unit or can be banked together as a bay of units. Lockers are available in various heights, widths and configurations.



**LAMINATE LOCKERS** Castledex

Locker Carcass: Available in either 16mm MR Melamine or 16mm PVC Rigid board. Locker Doors: Available in either 13mm Compact Laminate or 18mm Structural MR MDF. Internal of Locker: Includes shelf and hanging rail, pending on the design. Installation by Castledex - Lifetime Guarantee.



**DIGITAL LOCK** Digilock

Electronic lock solutions minimize management, enhance personal storage, and secure belongings with ease. Locks operate with an alphanumeric standard keypad or touch RFID interface. The interface also contains a key slot to operate locks with an ADA compliant User Key.



**BUDGET DIGITAL LOCK** Mini K 10

Perfect for keyless and wireless electronic access to lockers, cabinet locks, and drawers.



**TAMBOUR CABINETS/CUPBOARDS**

**Castledex**  
1200 x 460 x 1980mm  
Keying system embedded in door posts. Master and Keyed alike option available. Multiple options for filing & storage. Space saving – no swinging doors.



**STATIONARY CABINET CABINETS/CUPBOARDS**

**Castledex**  
910 x 450 x 1830mm Diameter  
It has 3 shelves for storing your items. The cupboard has a high quality construction with powder coated finish.



**FILING CABINET CABINETS/CUPBOARDS**

**Castledex**  
460 x 620 - 1321 mm  
The cabinet is made from durable steel and it has a riveted construction designed for rugged, every day use.



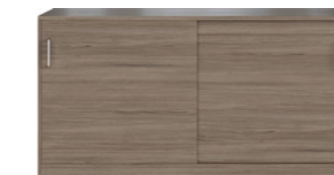
**CUPBOARD JOINERY CABINETS/CUPBOARDS**

**Castledex**  
1400 x 1250 x 815mm  
Offering versatile and practical storage solutions, our Universal range makes organising exceptionally easy. Adapts to any office landscape.



**BUFFET CABINETS/CUPBOARDS**

**Castledex**  
1720 x 500 x 1700mm  
Offering versatile and practical storage solutions, our Universal range makes organising exceptionally easy with a contemporary look.



**CREDENZA CABINETS/CUPBOARDS**

**Castledex**  
2000 x 450mm x 450mm  
25mm thick top with 18mm carcass construction and 50mm high kickboard. Tambour doors available in charcoal, silver, white or translucent.



**CADDY CABINETS/CUPBOARDS**

**Castledex**  
1050mm x 560 x 500mm  
Versatile underdesk storage. Tambour door cabinet and filing cabinet combined. Available in left and right configuration. GECA Certified



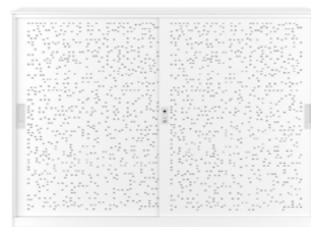
**PEDESTAL CABINETS/CUPBOARDS**

**Castledex**  
390 x 570 x 600mm  
Sleek European design with the emphasis on space & aesthetics. 3 Drawer. Master and Keyed alike option available. Full extension ball bearing runners



**OPEN SHELVING / BOOKCASE MEETING/BOARDROOM TABLE**

**Castledex**  
900 x 400 x 2000mm  
This versatile Bookcase can be adjusted to suit any storage requirements. The unit features adjustable shelves and the option to purchase additional shelves.



**SLIDING DOOR STEEL CABINETS/CUPBOARDS**

**Castledex**  
1800 x 460 x 1050mm  
With sharp clean cut lines, slimline profile detailing and eye-catching perforated sliding doors, Globe offers practical storage solutions with a modern twist.



**FOSTER CABINETS/CUPBOARDS**

**Apparent**  
1600 x 500 x 800mm  
The Foster credenza is an elegant storage solution, offering symmetry and simplicity in a modern arrangement of perforated handles.



**BANK CREDENZA CABINETS/CUPBOARDS**

**Apparent**  
2350 x 550 x 800mm  
Decorated with a relief pattern derived from architectural forms, geometric shapes and an abstract narrative.



# Lighting

Desks and Table

Floor

Ceiling

2021 / 2022 COLLECTION



**PRIDDY (BLACK)  
DESK AND TABLE**

Castledex

425 x 155mm Diameter

Vintage Black with White Inner. Globe Type: ES/ E27 (globe not include. Wattage: 40W. Voltage: 240V. Comes with cable in-line switch.



**PRIDDY (GREEN)  
DESK AND TABLE**

Castledex

425 x 155mm Diameter

Pastel Green with White Inner. Globe Type: ES/ E27 (globe not include. Wattage: 40W. Voltage: 240V. Comes with cable in-line switch.



**PRIDDY (PINK)  
DESK AND TABLE**

Castledex

425 x 155mm Diameter

Pastel Apricot with White Inner. Globe Type: ES/ E27 (globe not include. Wattage: 40W. Voltage: 240V. Comes with cable in-line switch.



**FRANGSALG (BLACK)  
DESK AND TABLE**

Castledex

550 x 180mm Diameter

The work lamp's timeless design with clean lines in bamboo and black suits most styles. Perfect to have on the desk.



**CIRCA  
DESK AND TABLE**

Pablo Designs

305 x 305 x 356mm

Circa lamps are a modern workplace lighting solution, allowing for 360 degree rotation and three levels of light intensity. LED.



**GAFFELDUN  
DESK AND TABLE**

Castledex

130 x 220mm

The lampshade of this table lamp is mouth blown and spreads a pleasant light through the frosted glass surface.



**UMA  
DESK AND TABLE**

Pablo Designs

154 x 154 x 280mm Diameter

The revolutionary UMA Sound Lantern redefines the portable lantern for the modern age. Fusing state-of-the-art Warm Dim LED technology.



**FRANGSALG (WHITE)  
DESK AND TABLE**

Castledex

550 x 180mm Diameter

The work lamp's timeless design with clean lines in bamboo and white suits most styles. Perfect to have on the desk.



**HORIZON  
DESK AND TABLE**

Humanscale

470 x 203mm Diameter

Its innovative Thin Film LED Technology and striking minimal design earned it a place in the Museum of Modern Art's permanent collection.



**INFINITY  
DESK AND TABLE**

Humanscale

368 x 445mm

Embodies performance in a sleek, timeless design. Equipped with constant torque 'Forever Hinges' for strength and stability in any position.



**LIBELLE RIGHT ANGLE  
DESK AND TABLE**

CMS

600mm

The Libelle task light provides soft and uniform LED light distribution with low total power consumption for energy efficiencies.



**GIRAVOLTA  
DESK AND TABLE**

Pedrali

150 x 330mm

Giravolta is a wireless lighting distinguished by a contemporary design. The main elements are two discs in plastic material.



**CONTOUR  
DESK AND TABLE**

Pablo Designs

305 x 152 x 445mm

Contour lighting offers fully dimmable, glare-free illumination in the workplace. Comes in woven fabric or hardwood, and includes a USB charging port.



**COLETTE  
DESK AND TABLE**

Pedrali

1800 x 800 x 720mm

A table or bedside lamp that stands out for its sculptural shapes and the colour. A translucent cylinder diffuses the light.





**LERGRYN/SKAFLET FLOOR LIGHT**

Castledex  
1680 x 1750 x 21300 x 480mm Diameter  
With this floor lamp you enjoy overhead lighting - with no ceiling outlet. And since you can slide the lamp base under a sofa, it takes up little floor space.



**FRANSALG FLOOR LIGHT**

Castledex  
1300 x 1440 x 250mm Diameter  
The floor lamp's timeless design with clean lines in bamboo and white suits most styles. Perfect to have by a favourite armchair.



**CALICO FLOOR LIGHT**

Castledex  
300 x 1570mm  
Painted and Powder Coated Metal Matt Stone and Light Plywood with Brushed Chrome or Matt Black and Dark Plywood Timber with Brushed Brass.



**CONTOUR FLOOR LIGHT**

Pablo Designs  
200 x 150 x 635mm  
Revealing and elegant open framed architecture captures warm LED illumination within a remarkably slender extruded aluminum structure.



**VELLA FLOOR LIGHT**

Pablo Designs  
1854 x 330 Diameter  
Single high-strength polymer shell with intuitive recline and side-to-side torsional flex to increase mobility and comfort.



**TIME OUT FLOOR LIGHT**

Pedrali  
1900 x 800mm Diameter  
Time Out is a floor lamp designed to illuminate gardens, terraces and outdoor spaces. It is made with rotational moulded polyethylene.



**HUSH ACOUSTIC CEILING LIGHT**

PLN Group  
650 x 1400mm Diameter  
The lightweight, semi-rigid acoustic panels help mitigate the impact of noise in an open-plan environment. Available in 4 sizes and 16 colours.



**SPRIG CEILING LIGHT**

Fluxwood Lighting  
30 x 50mm  
A sleek timber profile, harmoniously balanced neatly with a powder-coated aluminum bracket and rod suspension that sits squarely in the center.



**HELM CEILING LIGHT**

Luxxbox  
390 x 422mm Diameter  
A striking chair nuanced with soft lines and curves, from a contoured back to a classic round leg profile.



**SHINGLE CEILING LIGHT**

Luxxbox  
500 x 770mm Diameter  
Reduce ambient noise by up to 40% with the Shingle Acoustic Light by Luxxbox. Made from recycled material.



**CLOUDLINE CEILING LIGHT**

Fluxwood Lighting  
400 x 450mm  
Inspired by the softness of the sky fused with the precision of carved columns. A functional light source in a crisp architectural shape.



**LANDER LA1 CEILING LIGHT**

Fluxwood Lighting  
270 x 240mm Diameter  
A classic light fixture re-imagined through the craft of wood-turning. The statement hardwood pieces are paired with the timeless illuminated sphere.





# Accomodation

Bedframes

Mattressses

Storage

2021 / 2022 COLLECTION



**STEP BED** District Eight

2800 x 2390 x 1000mm

The Step Bed is an easeful sanctuary of contoured lines and enriching volume. Inspired by terraced fields in mountainous regions, its padded headboard folds gently inward to accentuate a sense of intimate privacy. The side frames branch off at its conjoining points with the headboard, creating a small area to place your books.

**DISTRIKT BED** District Eight

2690 x 2900 x 860mm

Our original platform bed with incorporated side tables. Solid oak construction with legs of steel and levelling brass glides.

**CANOPY** District Eight

2460 x 2290 x 860mm

Our original platform bed with incorporated side tables is now updated to include a steel canopy detailed with brass. Solid oak construction with legs of steel and levelling brass glides.

**VENKATA** Castledex

1510 x 2010 x 254mm

Strong steel frame structure with wood slat support for mattress longevity. Pine wood panel foot end detail and iron line industrial bed which oozes style and compliments any bedroom décor style. Square tube steel base with plywood slats provide strong support for any mattress type.

**NATURAL** Temple and Webster

208 x 188 x 350mm

MDF frame, solid plywood slats, solid rubberwood legs. Evenly spaced slats ensures that your mattress will always provide amazing balance no matter which position you lay on it. Invokes a rustic Scandinavian-inspired look that provides interiors with warm & homey appeal.

**IMOGEN** Temple and Webster

1000 x 2000mm

100% polyester upholstery, CARB P2 board frame, CertiPUR-US foam padding, plastic legs, plywood slats, steel centre support legs. Flat slat mattress support and Non-slip tape keeps the mattress in place. All hardware included.



**KING SINGLE BED** Sealy

1055 x 2030mm

Made right here in Australia using high quality, locally sourced materials. Enjoy pressure relieving comfort to help growing bodies rest and recover. Choose your individual comfort level and mattress size. The exclusive spring system provides support the young body needs to rest optimally.

**DOUBLE BED** Sealy

1385 x 1900mm

Sealy Posturepedic's Double mattresses are a versatile option, this size has a larger sleep surface for older children to grow into or a couple to share. Providing the support your body needs to rest optimally, wake up feeling refreshed with the exclusive CoreSupport® spring system.

**QUEEN BED** Sealy

1525 x 2030mm

One of our most popular sizes, the Sealy Posturepedic Queen mattress which is ideal for couples or those looking to maximise their sleep surface. Backed by world-leading orthopaedic research, Sealy Posturepedic features innovative technology designed to sense your weight and respond with the appropriate level of support.

**KING BED** Sealy

1835 x 2030mm

The Sealy Posturepedic King mattress makes the most of a larger bedroom with a luxury size that offers plenty of space to stretch out. Intelligent SmarTex® fabric draws away moisture to cool and regulate your sleep climate. A unique centre third ComfortCore layer conforms to your lower back for added pressure relief.

**PABLO BEDSIDE TABLE STORAGE**

Apparentt

400 x 400 x 450mm

A collection of faceted planes, complex angles and a delicate and crisply tapered edge. Each vantage offers a new delighting perspective.

**FOSTER CREENZA STORAGE**

Apparentt

1600 x 500 x 800mm

An elegant storage solution, offering symmetry and simplicity in a modern arrangement of perforated handles. The credenza sit sturdily on finned legs.

**FOSTER DRAWS STORAGE**

Apparentt

1000 x 500 x 1050mm

The drawers sit sturdily on finned legs, accented with exposed joinery and brass ferules. Made to order with solid American Oak.

**DISTRIKT TALLBOY STORAGE**

District Eight

480 x 750 x 1350mm

Designed as an addition to our Distrikt bed, this tallboy incorporates a hidden mirror and make up / jewellery

**DISTRIKT DRESSER STORAGE**

District Eight

480 x 170 x 830mm

Designed to meet a range of storage needs our Distrikt dresser offers deep drawers with easy to use metal glides. Made from solid oak.

**DRIFT TRIPLE DRAWERS STORAGE**

District Eight

420 x 500 x 320mm

Choose from shelves, cabinets and drawers to create a functional wall system that allows you to organise your home or office.



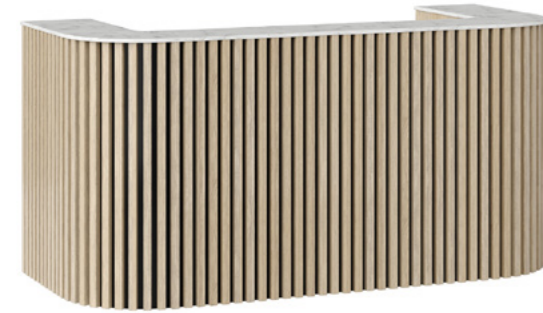


# Joinery

Reception

General

2021 / 2022 COLLECTION



**CASALI RECEPTION COUNTER** Castledex

3000 x 900 x 1050mm  
 Inspired by free-flowing curves and refined lines the Casali reception counter delivers a sense of class and modernity. The front of Casali is beautifully constructed with Steccawood paneling on a black or white backing, while the internal panels are crafted from melamine in your choice of finish and colour.



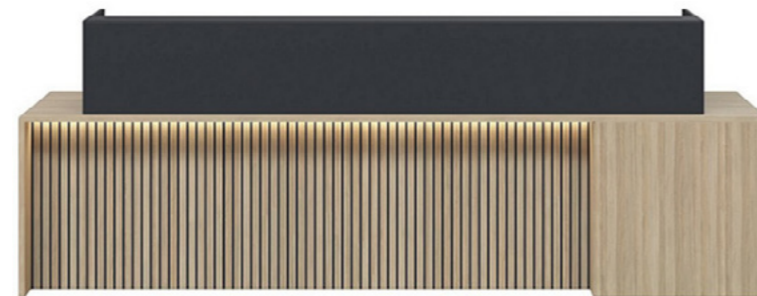
**CENTRAL RECEPTION COUNTER** Castledex

2400 x 900 x 1200mm  
 Central is a cost effective solution to your reception requirements. With its minimalist and modern design, Central offers a perfect balance of function and practicality and will meet all your reception requirements. Central can effectively handle the needs of the most demanding organisations.



**JIVE RECEPTION COUNTER** Castledex

2000 x 250 950mm  
 Turning contemporary into practicality, the Jive Reception Counter exudes luxury in any reception area. Complementing its 60mm thick construction is a subtle Hob, available in a range of laminate finishes. Designed to be versatile, a fitted return can be added to maximise desk space and modernise any office.



**STIRLING RECEPTION DESK** Castledex

1835 x 2030mm  
 Hob Laminex Absolute Matt Black or White / Front Panels Feature DDK Ink Lines For Return with Hob please contact customer service for a P.O.A. Custom Sizes and Return Options Available. Made to Order. Polytec Natural Oak and Laminex Absolute Matt Black Hob.



**ANGLE SLAT WALL GENERAL**

Castledex  
 2400 x 200 x 2700mm  
 Simple and stunning showpiece for any organisation's office space brings the walls alive injecting some visual energy into the environment.



**UPTOWN BUFFET GENERAL**

Castledex  
 1800 x 400 x 900mm  
 Featuring an open top bench space, storage nook, cupboard with pull to open doors, an internal shelf for hidden storage underneath.



**FULL FRAME PLANTER STORAGE GENERAL**

Castledex  
 1800 x 400 x 1350mm  
 The perfect complement your new or existing furniture. Available with artificial Dracaena plants with bark. Choose any colour or combination.



**BOX WALL CLUSTER GENERAL**

Castledex  
 750 x 330 x 400mm  
 A tasteful storage and display accessory for the office. They are tall enough to fit lever arch folders and are available in a range of sizes and finishes.



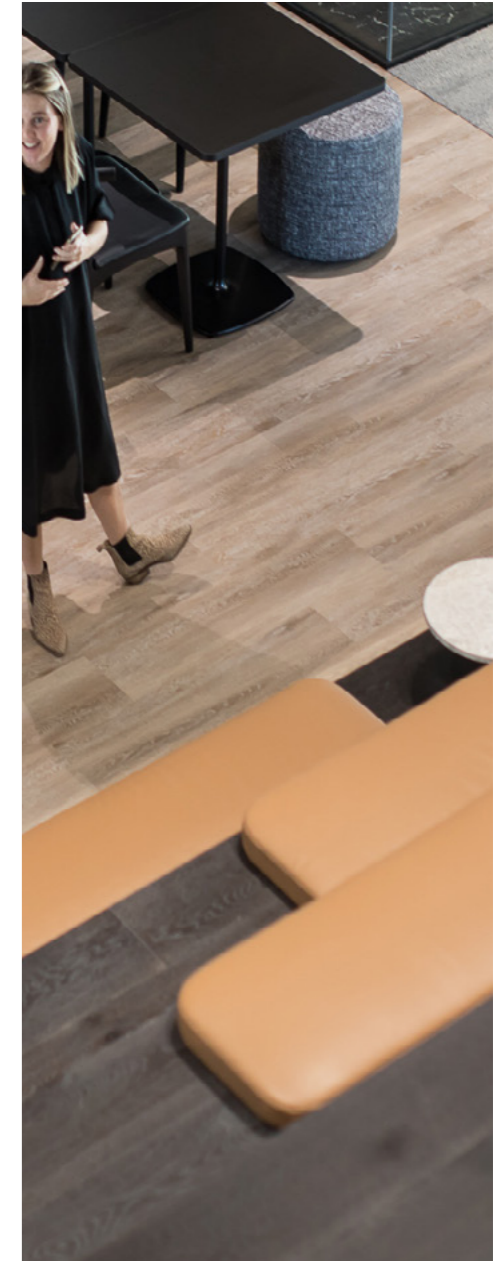
**SHOWCASE DISPLAY UNIT GENERAL**

Castledex  
 2400 x 400 x 2280mm  
 Two Toned Display Open Display Unit.



**VADA GENERAL**

Castledex  
 900 x 320 x 1200mm  
 Each element of Vada portrays a different narrative through the interplay of 4 modules which can be configured to suit many unique requirements.





# Ancillary

Coat Stands

Bins

Clocks

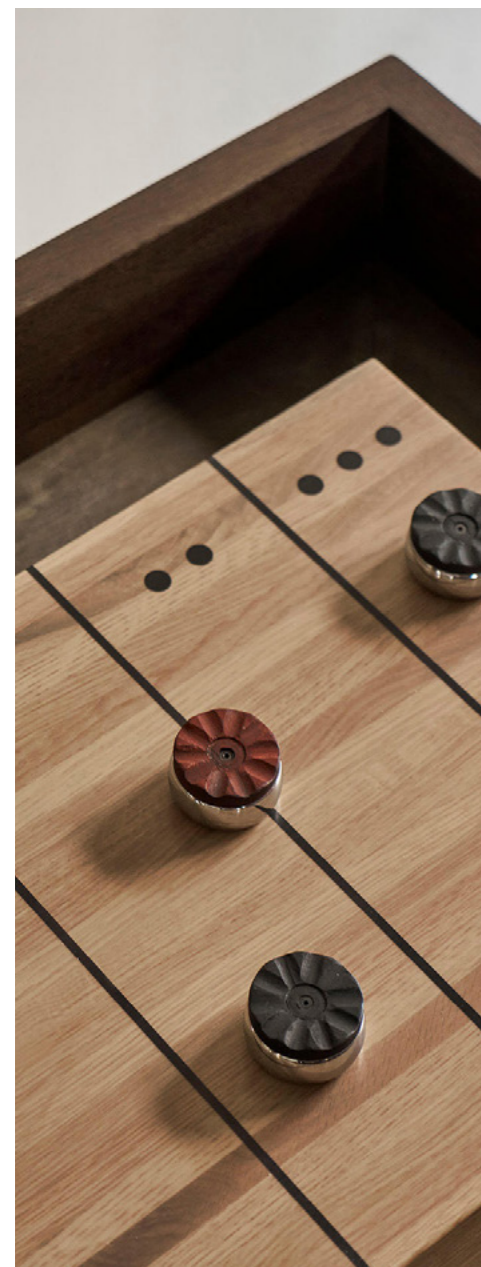
Rugs

Planters

Fun

Electrical

2021 / 2022 COLLECTION



#### RAY COAT STANDS

Pedrali

1715 x 400mm Diameter

A freestanding coat-stand that masterfully combines flowing lines, accentuating the beauty of the ash wood.



#### S17 COAT STANDS

Arko

1700 x 450mm Diameter

Defined by its casual modern form and refined detail, the S17 coat stand offers compact storage suitable for commercial and residential use.



#### FLAG COAT STANDS

Pedrali

1730 x 400mm Diameter

A coat stand with steel base and column in powder coated finish, while the arms are made of polypropylene charged with fiberglass.



#### 60L WHITE CONTAINER DEPOSIT BINS

Method Recycling

350 x 350 x 755mm

Designed to form flexible recycling stations, to be placed throughout a space. The bins complement modern aesthetics with colour-coded lids.



#### 60L BLUE PAPER BINS

Method Recycling

350 x 350 x 700mm

Designed to separate paper and card from possible contaminants. It's useful for offices, as they tend to have significant amounts of paper to recycle.



#### 60L GREY SOFT PLASTIC BINS

Method Recycling

350 x 350 x 755mm

Designed to form flexible recycling stations, to be placed throughout a space. The bins complement modern aesthetics with colour-coded lids.



#### ROTLÖTA CLOCK Castledex

400mm Diameter

Wall clock, ash veneer/light grey. A clock without the tick-tock. Its clean design means that the clock is great in many environments and all rooms in a home. Accurate at keeping time as it is fitted with a silent quartz movement so no disturbing ticking sounds. The hands are set using the dial on the back of the clock mechanism.



#### MITRE RUG - FEATHER

Weave

1600 x 2300mm

The Mitre rug is a super thick, soft, and luxurious floor rug. Made from a chunky spun yarn, and featuring a raised diamond pattern that is overlaid and handwoven into the rug in a contrasting colour, this is a beautiful rug.



#### SKÄRIGR CLOCK Castledex

260mm Diameter

A clock without the tick-tock. The mechanism has a silent movement so you can relax and sleep without being disturbed by the sound. Different wall materials require different types of fixing devices. Use fixing devices suitable for the walls in your home, sold separately.



#### LOGAN RUG - PIGMENT

Weave

2000 x 3000mm

Bringing texture and warmth to a space, Logan is the perfect rug for anchoring your lounge or dining room furniture.





**TABLE TENNIS** District Eight  
1780 x 2740 x 920mm  
Our signature Ping-Pong Table is both interactive and functional. It will seamlessly convert a space into a leisure or work space by shifting from a game table to a meeting or dining table.



**FOOSBALL TABLE** District Eight  
1890 x 1540 x 950mm  
Every component has been identified and designed to meet the function and aesthetic of the complete piece.



**PINBALL** Castledex  
720 x 1350 x 1720mm  
The Arcade Pinball has the classic look of a Pinball Machine and plays just like the original machines but with all the convenience of a modern Pinball Machine and all the arcade classic games. This amazing machine will bring back memories and is bound to be popular with everyone.



**DARTBOARD** Castledex  
250 x 457mm  
Bull's-eye! Create the perfect custom dart board. Featuring vibrant colour printing, this regulation size dart board is easily customised with your images, text and designs for a great gift or the perfect addition to your game room. Made to your exact specifications, this dart board will hit its mark! Includes 6 brass darts.



**OC PLANTER**  
Arko  
1640x 510 x 510mm  
Simple and elegant design made for interior and covered outdoor environments. Careful consideration towards indoor plant maintenance.



**OC HANGING PLANTER**  
Arko  
955 x 195 x 180mm  
Designed for interior use and available in two sizes. Each planter holds five sealed pot holders for ease of maintenance, and designed for ceiling mounting.



**OC VERTICAL PLANTER**  
Arko  
970 x 210 x 780mm  
Designed for interior use and holds ten sealed pot holders for ease of plant installation and maintenance. Can be used to cap workstations.



**LOOP PLANTER**  
Arko  
1000 x 250 x 1880mm  
A vertical garden screening device for interior use. Consisting of a series of vertical lines looped over to create a highly sculptural 3D trellis.

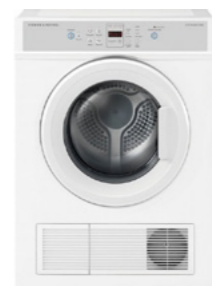


**LANNA PLANTER**  
Arko  
970 x 210 x 585mm  
Our range of vertical garden screens are designed and made in Melbourne to an architectural standard from pre-galvanised wire.



**CIRCA PLANTER**  
Arko  
660 x 300mm Diameter  
Made from zinc coated steel with a powder coated finish, the stand houses a sealed polypropylene pot ensuring that water remains inside.





**DRYER  
ELECTRICAL / WHITEGOODS**  
Fisher and Paykel  
600 x 572 x 830mm  
6Kg Sensor Vented Dryer features variable wash programs, Auto Sensing Technology, and SmartTouch controls.



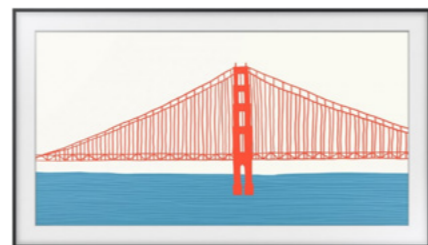
**WASHING MACHINE  
ELECTRICAL / WHITEGOODS**  
Samsung  
600 x 660 x 850mm  
Easily wash piles of clothes with the superior cleaning performance and efficiency provided by the 7.5kg BubbleWash Front Load Washing Machine.



**DISHWASHER  
ELECTRICAL / WHITEGOODS**  
Fisher and Paykel  
597 x 600 x 870mm  
Efficient and thorough washing of your tableware, cookware, and more. Featuring a 14-place setting interior, this dishwasher has ample space.



**VACUUM CLEANER  
ELECTRICAL / WHITEGOODS**  
Dyson  
240 x 1244 x 250mm  
The Dyson V8 Animal Stick Vacuum gives you the versatility of cord-free performance while offering impressive suction power.



**TV  
ELECTRICAL / WHITEGOODS**  
Samsung  
1237.9 x 708.8 x 24.9mm  
With a Quantum Processor 4K Picture Engine, a sleek design, and an easily re-configurable setup, the 43-inch The Frame LS03A 4K QLED Smart TV.



**DYSON FAN  
ELECTRICAL / WHITEGOODS**  
Dyson  
1054 x 223mm Diameter  
Thanks to its powerful airflow and fully-sealed filter system, the Dyson Pure Cool™ purifying tower fan brings powerful air circulation.



**FRIDGE  
ELECTRICAL / WHITEGOODS**  
Samsung  
912 x 716 x 1780mm  
With its sleek, space-saving design and plentiful capacity lets you set up a practical location for storing food, drinks, and other perishable goods.



**FRIDGE FREEZER  
ELECTRICAL / WHITEGOODS**  
Samsung  
817 x 715 x 1776mm  
Keep your perishables at their best condition for longer with the Samsung 498L French Door Refrigeration - Silver Layered Steel.



**BAR FRIDGE  
ELECTRICAL / WHITEGOODS**  
Husky  
555 x 495 x 845mm  
118L Single Door Back Bar Fridge is sure to give a stylish look to your indoor entertaining area, and a wide range of features.



**WINE FRIDGE  
ELECTRICAL / WHITEGOODS**  
Vintec  
493 x 577 x 830mm  
With a vibration-proof design and insulated side panels, the Vintec 35 Bottle Single Zone Wine Cabinet helps keep your wine collection organised.







# Case Study

## Curtin Exchange Project

Exchange is Curtin University's first dedicated industry-connected innovation precinct.

Exchange is Curtin University's first dedicated industry-connected innovation precinct. The Curtin Exchange Precinct will bring education, industry, and community together - encouraging and facilitating the sharing of knowledge, ideas and creativity and serving as a catalyst for innovation and progress. The project includes commercial, hospitality and residential areas including, two halls of residence, a hotel and serviced apartments offering nearly 1,000 beds.

Probuild engaged Castledex to provide a \$2 million plus turn-key single-source approach to FF&E procurement; this included managing an extensive sample review process, programming just in time delivery for over 15,000 items and planning and undertaking the procurement, storage, logistics, installation, and commissioning of all items within the halls of residence, hotel, and serviced apartments.

Duration  
**6 Months**

Rooms  
**950+ Rooms**

Builder  
**Probuild**



## It's a place to meet, learn, work and live, where people come first.

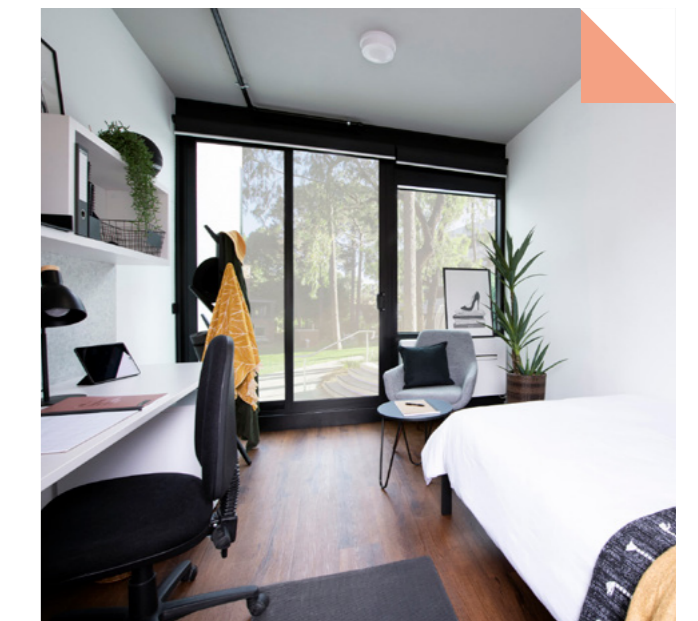
Items provided included - beds and mattresses, task chairs and soft seating such as lounges and armchairs, dining tables, coffee tables, dining chairs, pedestals, and room accessories such as shower caddies, lamps, and storage solutions. Other items provided included shelving, whiteboards, outdoor furniture, rugs, safes, and loose joinery such as bedside tables, tv units and credenzas. Probuild then awarded variations to provide over \$200,000 worth of outdoor furniture.

Castledex involvement in the Curtin Exchange Precinct demonstrates our ability to undertake large volume furniture and joinery fit-outs over an extended period. Castledex has delivered this project to program and budget. Castledex was uniquely placed within the WA market to provide a single-source solution allowing for all contingencies at the height of the pandemic, managing multiple supply chains and logistic challenges, which included investing in over 1,200m<sup>2</sup> of additional storage capacity in Osborne Park.



Curtin Exchange at one time had more cranes on it than any other site in Australia. Its been a fantastic journey to see the vision of these unique accomodation solutions come to life.

**Benjamin Martin / General Manager Castledex**



## A Proactive Approach

Our proactive approach to installation has resulted in fewer hours worked, and ongoing interactions with other trades have resulted in a seamless installation where Castledex has been ready to go as areas become available for each item of FF&E.

## In House Sampling

Castledex ran its own sampling process to ensure that the different stakeholders in the process; Curtin, Programmed Facility Management, Probuild and all three operators (Unilodge, Neseu & St Catherines College) all were able to impart their footprint into procurement and design.

We worked closely with Probuild to ensure that we worked within their cost and leadtime constraints to achieve their outcomes as well.



Two student accommodation buildings with 50 student beds

Third building housing 40 apartments and 60 hotel rooms

57,400m<sup>2</sup> of combined GFA

CDX Single Source. When every piece matters.



### POPPI DINING/BREAKOUT CHAIR

Castledex

500x 520 x 790mm

With its clean lines and contemporary style, the Poppi chair enhances any space, from offices to hospitality environments.



### PRIDDY (PINK) DESK AND TABLE

Castledex

425 x 155mm Diameter

Pastel Apricot with White Inner. Globe Type: ES/ E27 (globe not include. Wattage: 40W. Voltage: 240V. Comes with cable in-line switch.



### DOUBLE BED Sealy

1385 x 1900mm

Sealy Posturepedic's Double mattresses are a versatile option, this size has a larger sleep surface for older children to grow into or a couple to share. Providing the support your body needs to rest optimally, wake up feeling refreshed with the exclusive CoreSupport® spring system.



## Case Study

# Iona Presentation College

A lesson in how to inspire your learning space.

Perth's Iona Presentation College has a longstanding history of academic excellence dating back to 1907. The original Mosman Park campus was founded by a group of Presentation Sisters from Ireland with the ambition to provide education and assistance to those in need. From its humble beginnings, the College has grown to become an immensely sought-after education facility, pairing tradition with education excellence.

More recently, the College embarked on the transformation of its library and learning blocks into state-of-the-art education facilities. The two-year project culminated with the opening of the new learning centre in November 2020.

The College aspired to fuse the rich history of the school with an innovative learning centre at the heart of the campus. It sought to integrate an array of contemporary and collaborative spaces for students to create, investigate, explore and communicate.

In collaboration with EIW Architects and Iona Presentation College, we presented our Danish education-focused furniture partner, Four Design, because their product range aligned with the innovative yet flexible needs that the project demanded. As part of this process, we assembled our showroom to reflect the proposed learning configurations with the Four Design furniture in situ. This allowed the College representatives and architect to visualise how the learning spaces would flow.

Duration  
**3 Months**

Architect  
**EIW Architects**

Builder  
**PS Structures**



## The scale of the project presented unique challenges

With furniture requirement spanning over 513 items, the logistics of the project presented several complexities. The furniture scope included desks, chairs, lounges, booths, collaborative tables and outdoor furniture from a selection of manufacturer locations around Australia; juxtaposed with delivery to one of the smallest school sites in Perth.

Furniture selection wasn't simply replicated; there were many pieces with varying finishes, sizes and fabrics. Some with the most intricate detail setting them apart adding to the challenge.

The program for delivery had many moving parts. The logistics for delivery to site and installation was immense, as we had to stagger it in line with the builder's schedule, and a tight delivery access timeline. Accordingly, the fit out was undertaken at different stages, all while construction was underway in other sections of the buildings.



We're so proud to have been chosen to collaborate on Iona College's symbolic learning facility. Our entire team worked hard on the project and the outcome is simply stunning. As with the 100-year-old school, we're confident the furniture selection will stand the test of time.

**Bruce Dewar** / Director, Castledex

### Pairing inspirational product with a dedicated team

In managing the volume of furniture, we took a methodical approach to overcome the staggered deliveries. We worked intensively at the planning phase six months earlier. Once the goods arrived at our warehouse from our various Australian manufacturing partners, we labelled and isolated the furniture for each space based on the expected delivery date.

Our diligent Perth-based installation team worked closely with the builder to understand the timeframes for the different spaces and proactively communicated to keep on top of the schedule.

### Pairing inspirational product with a dedicated team

In managing the volume of furniture, we took a methodical approach to overcome the staggered deliveries. We worked intensively at the planning phase six months earlier. Once the goods arrived at our warehouse from our various Australian manufacturing partners, we labelled and isolated the furniture for each space based on the expected delivery date.

Our diligent Perth-based installation team worked closely with the builder to understand the timeframes for the different spaces and proactively communicated to keep on top of the schedule.



# The scale of the project presented unique challenges

With furniture requirement spanning over 513 items, the logistics of the project presented several complexities. The furniture scope included desks, chairs, lounges, booths, collaborative tables and outdoor furniture from a selection of manufacturer locations around Australia; juxtaposed with delivery to one of the smallest school sites in Perth.

Furniture selection wasn't simply replicated; there were many pieces with varying finishes, sizes and fabrics. Some with the most intricate detail setting them apart adding to the challenge.

The program for delivery had many moving parts. The logistics for delivery to site and installation was immense, as we had to stagger it in line with the builder's schedule, and a tight delivery access timeline. Accordingly, the fit out was undertaken at different stages, all while construction was underway in other sections of the buildings.



We're so proud to have been chosen to collaborate on Iona College's symbolic learning facility. Our entire team worked hard on the project and the outcome is simply stunning. As with the 100-year-old school, we're confident the furniture selection will stand the test of time.

Bruce Dewar / Director, Castledex



**FORSURE 88 VISITOR CHAIR**  
Four Design  
525x 530 x 840mm  
Clean lines and carefully thought out construction. This perfect robust, stacking chair has endless colour combinations.



**FOUR ME 88 VISITOR CHAIR**  
Four Design  
490 x 440 x 1035mm  
STILL WAITING FOR LINK TO PRODUCT PAGE.



**FOURREAL FLAKE** Four Design  
1000 x 2000mm  
Create and recreate, again and again. These innovative tables are built on the ideas of democratic design and developed to meet the need for agile and flexible solutions for people to meet at eye level. The Four@Real 741 is an inspiring framework for collaboration and multipurpose use.



# Case Study

## Optus Stadium

World class. .

Castledex is proud to have been heavily involved in the delivery of one of WA's landmark projects the new Perth Optus Stadium.

This 60,000 seat world-class, multi-purpose Stadium will host a variety of sports and entertainment events. Castledex was uniquely involved in the delivery of this project working closely with multiplex and the State Government.

The team at Castledex firstly secured a portion of the Premium furniture in the victory lounge. However, during the tender process we showed that we were capable of providing options for the entire FFE package; 9600 items. This allowed us to enter into negotiations and present our capabilities to deliver.

We were then fortunate to secure the supply of the remainder of FFE items for everything in the back of house areas. This included workstations and task seating for Media, Coaches areas & Radio areas all the way to massage tables, prayer rugs and whiteboards for remaining back of house areas.

Duration  
**3 Months**

Architect  
**Hassell + Cox**

Builder  
**Multiplex**



## From lounges to prayer rugs - we do it all.

In total Castledex provided over 4500 of the 9600 items required. It was this single source approach that initiated Multiplex to request Castledex to provide a logistical solution to deliver and install the other half of the FFE items. Effectively meaning we would deliver every FFE item into the stadium.

We put a proposal and plan together and worked with the other suppliers to ensure that we met the strict programme of the stadium. This was completed to the vast satisfaction of all parties. We held regular meetings and provided regular excel updates to the stakeholders involved to ensure we were compliant with our plan. We also RFID tagged every item for the BIM model developed for the State.

Since opening we have continued to provide furniture and logistical solutions to Venues Live the company operating the new stadium.

This is undoubtedly one of the best projects we have been privileged to be involved with in our history.







# Case Study

## St Martins Tower

### Meet, greet, work and relax

The shared success between Castledex, Sheffield and the management team at St Martin's is plain to see with the revamped foyer that brings elegant modern design into the timeless aesthetic of St Martins Centre.

Sheffield and the Management Team at St Martin's had a problem, their lobby was looking tired and dated and, the furniture did not do justice to the design.

The brief and challenge to Castledex were simple - a blank canvas to showcase furniture and allow tenants and visitors to use the floor space in the foyer to facilitate 'meet, greet, work and relax'.

The Castledex team engaged the design skills of IA Design to help turn the vision into reality.

Leasing  
**Sheffield**

Designer  
**IA Design**

Client  
**St Martins**

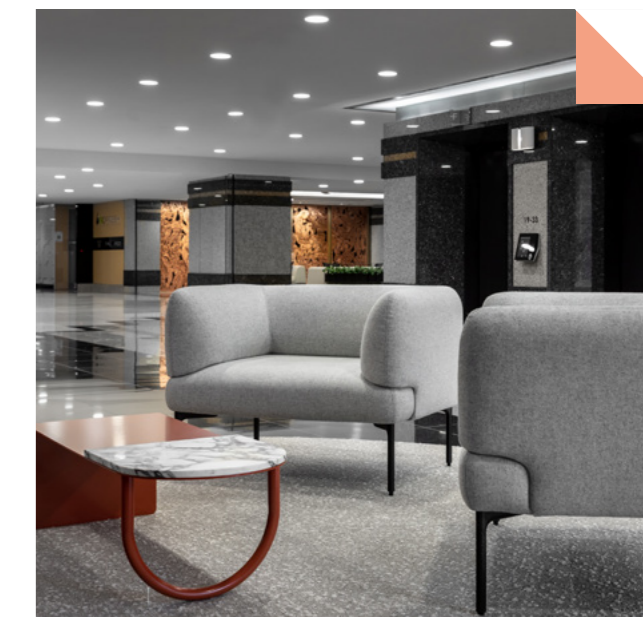
## From collaboration comes transformation.

Working closely with Interface's Nikki Wood, the Castledex and IA Design set about working on a design proposal to create four distinct areas meeting the needs of those using the lobby.

Leaning on our extensive list of partner brands, Castledex was able to work closely with Haworth, Boss Design, SBW, Arko and Apparentt to combine Australian Made sophistication and European elegance. Coupling furniture design with Interface's floor coverings helped to collate the palette of both the furniture and the building.

And in doing so, creating beautiful vignettes of activity in the lobby of one of Perth's most iconic buildings.

Since installation, the use of the space has increased, tenants see it as an extension of their workspaces.



**ESTEEM  
COFFEE/SIDE TABLE**  
Apparentt



**MAARI  
DINING/BREAKOUT CHAIR**  
Haworth



When *every piece* matters.

**OFFICE**

17 Ruse Street, Osborne Park  
WA 6017

**SHOWROOM**

The Atrium Suite 7, 168 St Georges Tce, Perth WA  
(Ground floor Entry on Kings St Side)

**EMAIL**

[info@castledex.com.au](mailto:info@castledex.com.au)

**PHONE**

(08) 6241 2430

[castledex.com.au/singlesource](http://castledex.com.au/singlesource)